

APPENDIX A FIGURE 1 - PROPOSED PROJECT

Centuria 69 kV Transmission Line and Substation Project



Location
 Parts of S19 and S30-31, T35N, R17W;
 S36, T35N, R18W; S1 and S12, T34N, R18W
 Polk County, WI

0 2,000 4,000 Feet

Project Information
 Project Number : 009-0015-01
 September 4, 2009

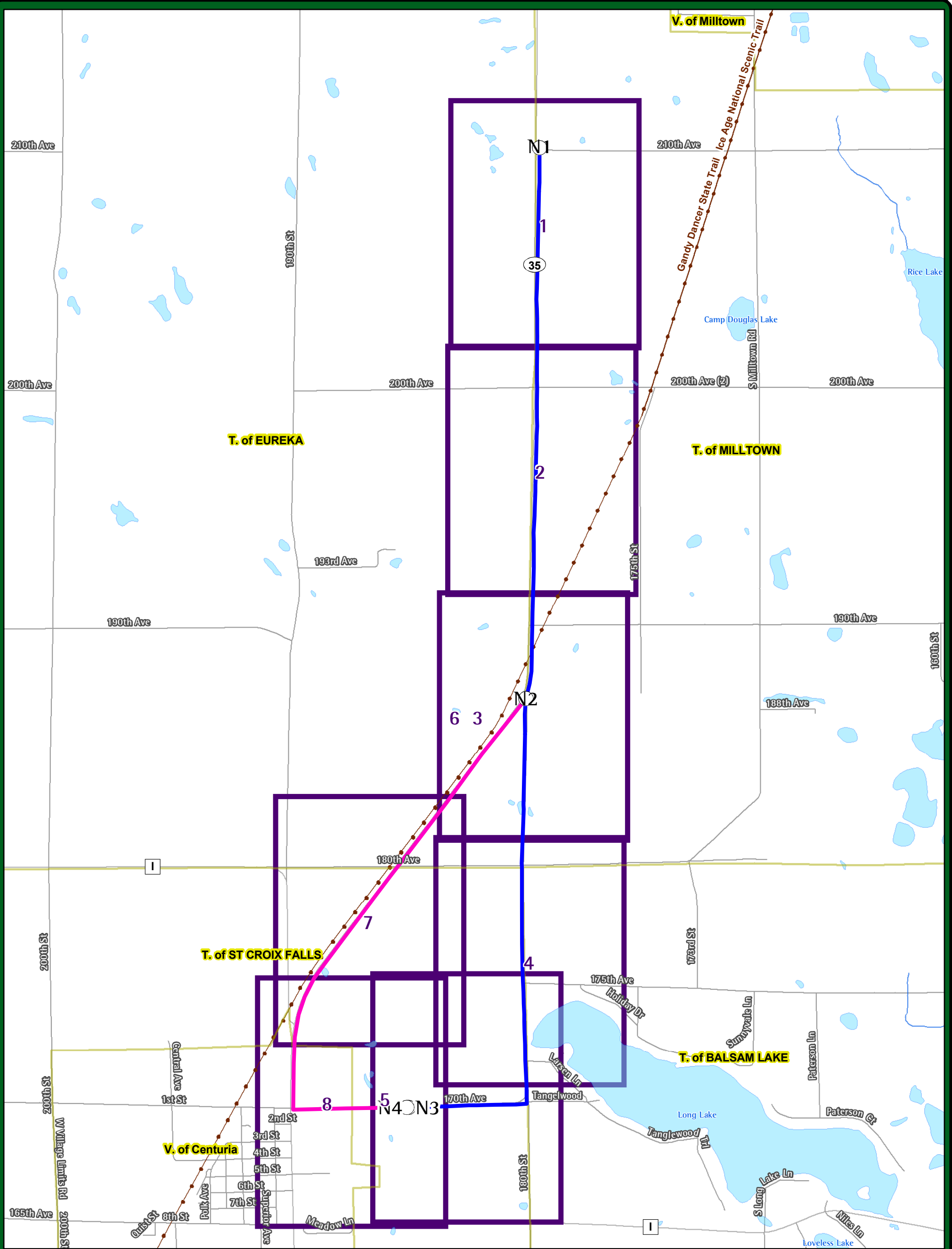
- Legend**
- Nodes
 - Approximate Preferred Route
 - Approximate Alternate Route Segment
 - Approximate Substation Site
 - City, Town or Village Boundary
 - Road
 - Trail
 - WDNR 24k Hydrography
 - Perennial Stream
 - Intermittent Stream
 - Waterbody

Mapping Provided By:

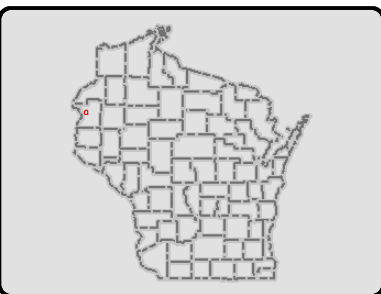
NRC
 Natural Resources Consulting, Inc.

209 Commerce Parkway
 P.O. Box 128
 Cottage Grove, WI 53527-0128
 phone: 608-839-1998
 fax: 608-839-1995
 www.nrcdifference.com

Base Map Data Sources: NWEAC, WDOT, WDNR



APPENDIX A FIGURE 2 - PAGE INDEX MAP (1" = 400' SCALE) Centuria 69 kV Transmission Line and Substation Project



Location
Parts of S19 and S30-31, T35N, R17W;
S36, T35N, R18W; S1and S12, T34N, R18W
Polk County, WI

0 1,000 2,000 Feet

Project Information
Project Number : 009-0015-01
September 4, 2009

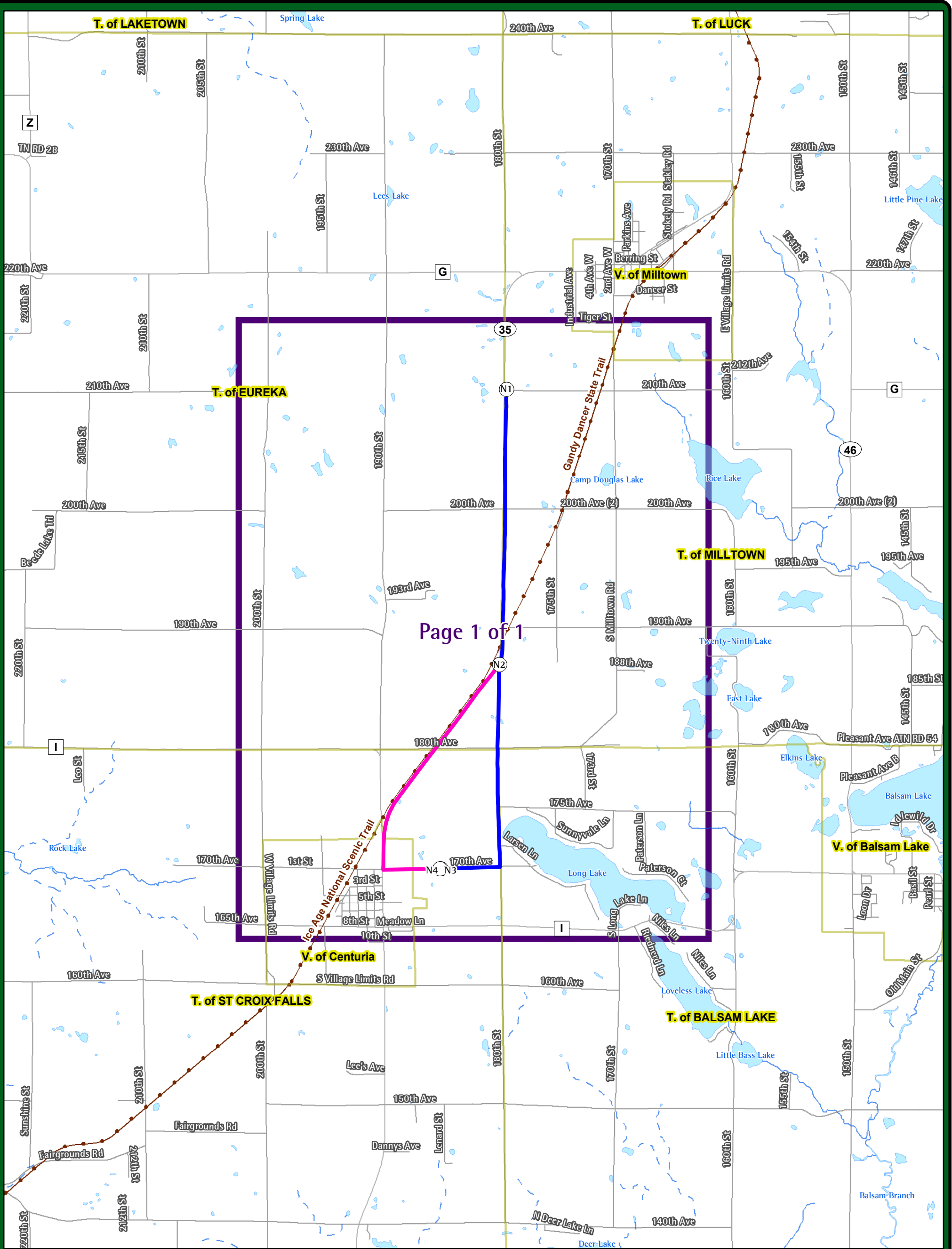
Legend	
	Nodes
	Approximate Preferred Route
	Approximate Alternate Route Segment
	Approximate Substation Site
	Municipal Boundary
	Map Page 1" = 400' Scale
	Road
	Trail
	WDNR 24k Hydrography
	Perennial Stream
	Intermittent Stream
	Waterbody

Mapping Provided By:

NRC
Natural Resources Consulting, Inc.

209 Commerce Parkway
P.O. Box 128
Cottage Grove, WI 53527-0128
phone: 608-839-1998
fax: 608-839-1995
www.nrcdifference.com

Base Map Data Sources: NWEAC, WDOT, WDNR



Page 1 of 1



APPENDIX A FIGURE 3 - PAGE INDEX MAP (1" = 2000' SCALE) Centuria 69 kV Transmission Line and Substation Project



Location
Parts of S19 and S30-31, T35N, R17W;
S36, T35N, R18W; S1 and S12, T34N, R18W
Polk County, WI

0 2,000 4,000 Feet

Project Information
Project Number : 009-0015-01
September 4, 2009

Legend	
	Nodes
	Approximate Preferred Route
	Approximate Alternate Route Segment
	Approximate Substation Site
	Municipal Boundary
	Map Page 1" = 2000' Scale
	Road
	Trail
	WDNR 24k Hydrography
	Perennial Stream
	Intermittent Stream
	Waterbody

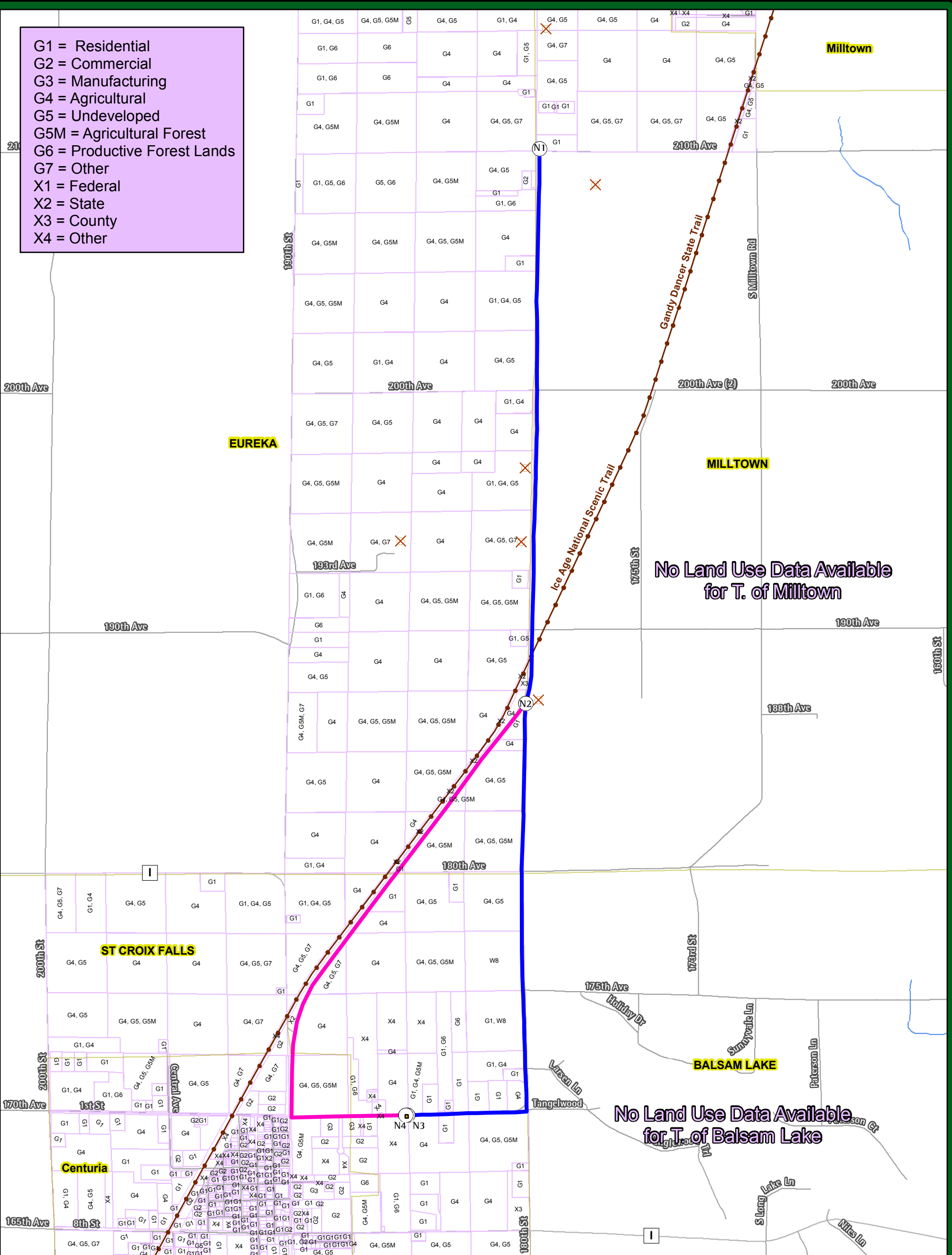
Mapping Provided By:

NRC
Natural Resources Consulting, Inc.

209 Commerce Parkway
P.O. Box 128
Cottage Grove, WI 53527-0128
phone: 608-839-1998
fax: 608-839-1995
www.nrcdifference.com

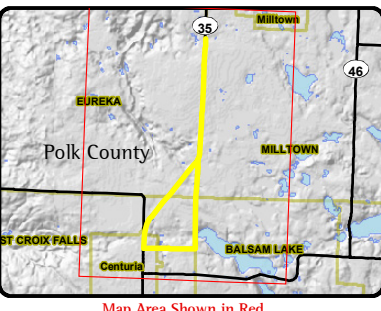
Base Map Data Sources: NWEAC, WDOT, WDNR

- G1 = Residential
- G2 = Commercial
- G3 = Manufacturing
- G4 = Agricultural
- G5 = Undeveloped
- G5M = Agricultural Forest
- G6 = Productive Forest Lands
- G7 = Other
- X1 = Federal
- X2 = State
- X3 = County
- X4 = Other



APPENDIX A FIGURE 4 - EXISTING LAND USE

Centuria 69 kV Transmission Line and Substation Project



Location
 Parts of S19 and S30-31, T35N, R17W;
 S36, T35N, R18W; S1 and S12, T34N, R18W
 Polk County, WI

0 1,000 2,000 Feet

Project Information
 Project Number : 009-0015-01
 September 4, 2009

Legend

- Nodes
- Approximate Preferred Route
- Approximate Alternate Route Segment
- Approximate Substation Site
- ✕ Livestock Operation
- Municipal Boundary
- Trail
- Road
- Land Use

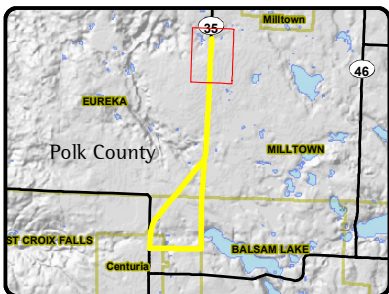
Mapping Provided By:

NRC
 Natural Resources Consulting, Inc.

209 Commerce Parkway
 P.O. Box 128
 Cottage Grove, WI 53527-0128
 phone: 608-839-1998
 fax: 608-839-1995
 www.nrcdifference.com



APPENDIX A FIGURE 5 - ORTHOPHOTOGRAPHY / LAND COVER Centuria 69 kV Transmission Line and Substation Project



Location
Parts of S19 and S30-31, T35N, R17W;
S36, T35N, R18W; S1 and S12, T34N, R18W
Polk County, WI

0 200 400 Feet

Project Information
Project Number : 009-0015-01
September 4, 2009

Legend	
	Nodes
	Approximate Preferred Route
	Approximate Alternate Route Segment
	Approximate Substation Site
	Township Line
	Section Line
	Land Cover Boundary
	C = Cropland
	F = Upland Forest
	G = Grassland
	W = Wetland
	OF = Open Field
	RD = Road
	RS = Residential
	CM = Commercial

Mapping Provided By:

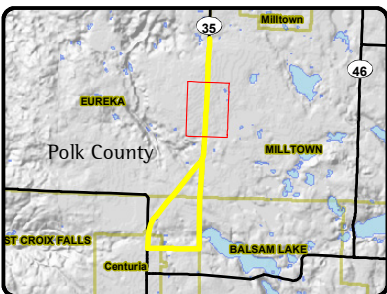
NRC
Natural Resources Consulting, Inc.

209 Commerce Parkway
P.O. Box 128
Cottage Grove, WI 53527-0128
phone: 608-839-1998
fax: 608-839-1995
www.nrcdifference.com

Base Map Data Sources: NWE, WDOT & USDA NAIP 2008 Orthophotography



APPENDIX A FIGURE 5 - ORTHOPHOTOGRAPHY / LAND COVER Centuria 69 kV Transmission Line and Substation Project



Location
Parts of S19 and S30-31, T35N, R17W;
S36, T35N, R18W; S1 and S12, T34N, R18W
Polk County, WI

0 200 400 Feet

Project Information

Project Number : 009-0015-01
September 4, 2009

Legend

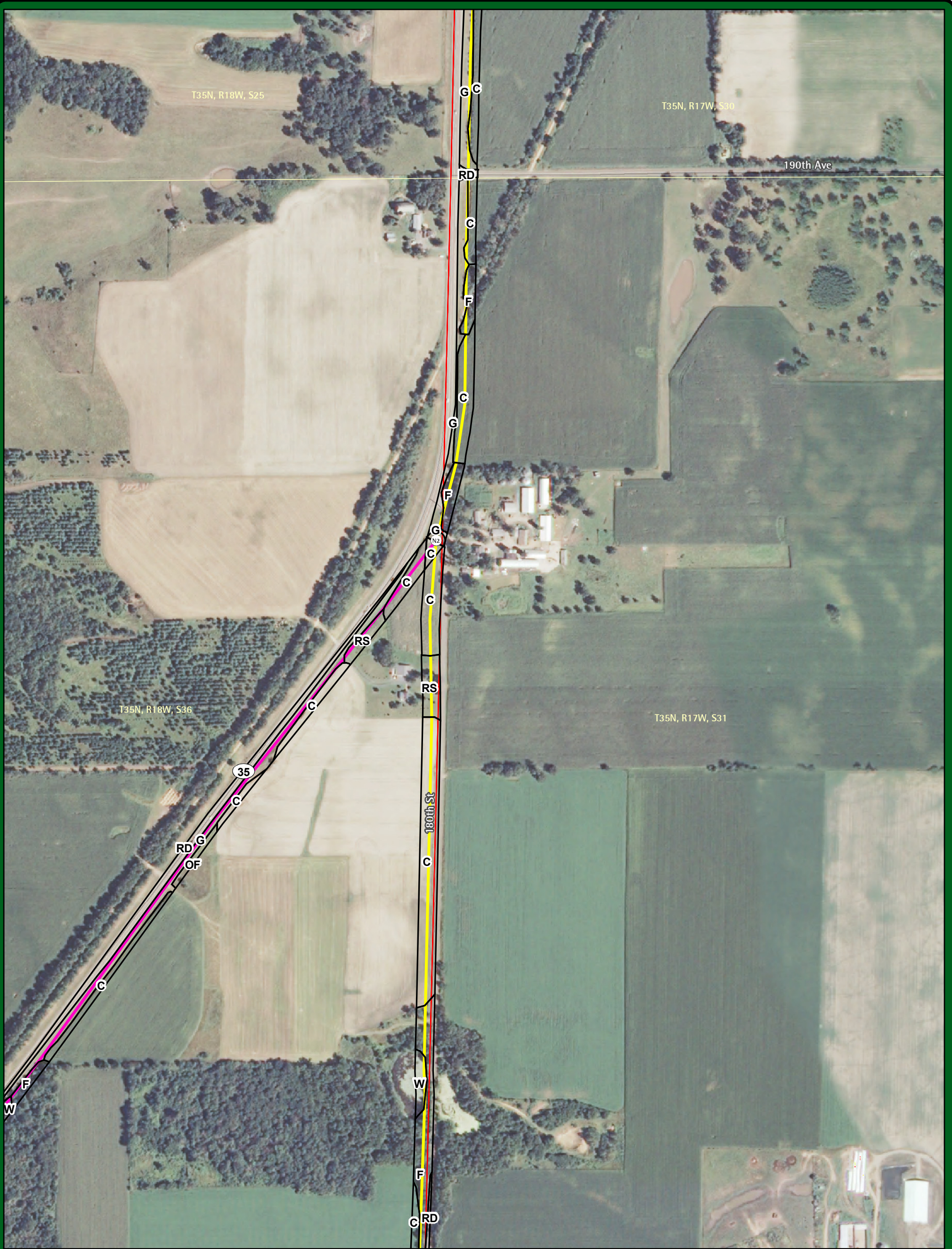
- Nodes
- Approximate Preferred Route
- Approximate Alternate Route Segment
- Approximate Substation Site
- Township Line
- Section Line
- Land Cover Boundary

- C = Cropland
- F = Upland Forest
- G = Grassland
- W = Wetland
- OF = Open Field
- RD = Road
- RS = Residential
- CM = Commercial

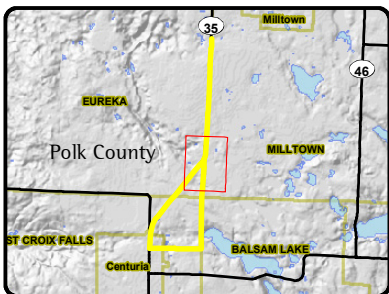
Mapping Provided By:

NRC
Natural Resources Consulting, Inc.
209 Commerce Parkway
P.O. Box 128
Cottage Grove, WI 53527-0128
phone: 608-839-1998
fax: 608-839-1995
www.nrcdifference.com

Base Map Data Sources: NWECC, WDOT & USDA NAIP 2008 Orthophotography



APPENDIX A FIGURE 5 - ORTHOPHOTOGRAPHY / LAND COVER Centuria 69 kV Transmission Line and Substation Project



Location
Parts of S19 and S30-31, T35N, R17W;
S36, T35N, R18W; S1 and S12, T34N, R18W
Polk County, WI

0 200 400 Feet

Project Information
Project Number : 009-0015-01
September 4, 2009

Legend

- Nodes
- Approximate Preferred Route
- Approximate Alternate Route Segment
- Approximate Substation Site
- Township Line
- Section Line
- Land Cover Boundary

- C** = Cropland
- F** = Upland Forest
- G** = Grassland
- W** = Wetland
- OF** = Open Field
- RD** = Road
- RS** = Residential
- CM** = Commercial

Mapping Provided By:

NRC
Natural Resources Consulting, Inc.

209 Commerce Parkway
P.O. Box 128
Cottage Grove, WI 53527-0128
phone: 608-839-1998
fax: 608-839-1995
www.nrcdifference.com

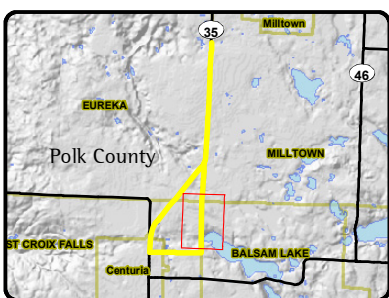
Base Map Data Sources: NWE, WDOT & USDA NAIP 2008 Orthophotography

Appendix A Figure 5 - Page 3 of 8

The information presented in this map document is advisory and is intended for reference purposes only.



APPENDIX A FIGURE 5 - ORTHOPHOTOGRAPHY / LAND COVER Centuria 69 kV Transmission Line and Substation Project



Location
Parts of S19 and S30-31, T35N, R17W;
S36, T35N, R18W; S1 and S12, T34N, R18W
Polk County, WI

0 200 400 Feet

Project Information
Project Number : 009-0015-01
September 4, 2009

Legend	
	Nodes
	Approximate Preferred Route
	Approximate Alternate Route Segment
	Approximate Substation Site
	Township Line
	Section Line
	Land Cover Boundary
	C = Cropland
	F = Upland Forest
	G = Grassland
	W = Wetland
	OF = Open Field
	RD = Road
	RS = Residential
	CM = Commercial

Mapping Provided By:

NRC
Natural Resources Consulting, Inc.

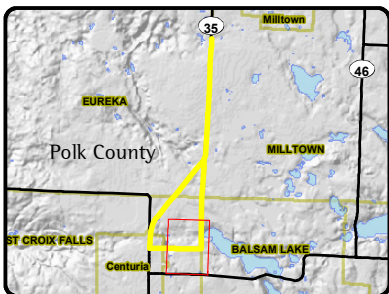
209 Commerce Parkway
P.O. Box 128
Cottage Grove, WI 53527-0128
phone: 608-839-1998
fax: 608-839-1995
www.nrcdifference.com

Base Map Data Sources: NWECC, WDOT & USDA NAIP 2008 Orthophotography

Appendix A Figure 5 - Page 4 of 8



APPENDIX A FIGURE 5 - ORTHOPHOTOGRAPHY / LAND COVER Centuria 69 kV Transmission Line and Substation Project



Location
Parts of S19 and S30-31, T35N, R17W;
S36, T35N, R18W; S1 and S12, T34N, R18W
Polk County, WI

0 200 400 Feet

Project Information
Project Number : 009-0015-01
September 4, 2009

Legend

- Nodes
- Approximate Preferred Route
- Approximate Alternate Route Segment
- Approximate Substation Site
- Township Line
- Section Line
- Land Cover Boundary

- C = Cropland
- F = Upland Forest
- G = Grassland
- W = Wetland
- OF = Open Field
- RD = Road
- RS = Residential
- CM = Commercial

Mapping Provided By:

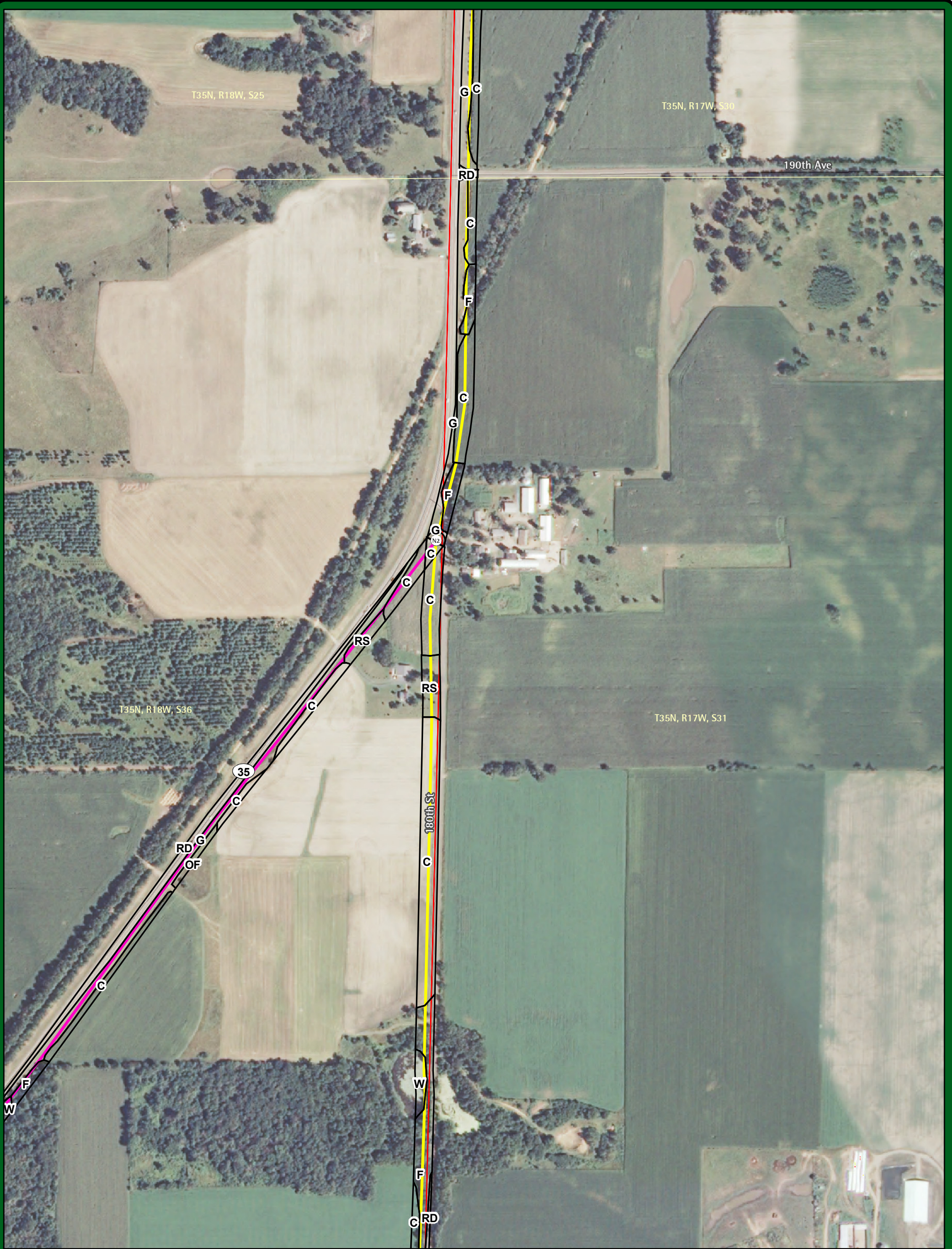
NRC
Natural Resources Consulting, Inc.

209 Commerce Parkway
P.O. Box 128
Cottage Grove, WI 53527-0128
phone: 608-839-1998
fax: 608-839-1995
www.nrcdifference.com

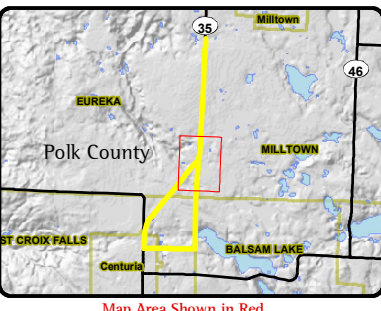
Base Map Data Sources: NWE, WDOT & USDA NAIP 2008 Orthophotography

Appendix A Figure 5 - Page 5 of 8

The information presented in this map document is advisory and is intended for reference purposes only.



APPENDIX A FIGURE 5 - ORTHOPHOTOGRAPHY / LAND COVER Centuria 69 kV Transmission Line and Substation Project



Location
Parts of S19 and S30-31, T35N, R17W;
S36, T35N, R18W; S1 and S12, T34N, R18W
Polk County, WI

0 200 400 Feet

Project Information
Project Number : 009-0015-01
September 4, 2009

Legend

- Nodes
- Approximate Preferred Route
- Approximate Alternate Route Segment
- Approximate Substation Site
- Township Line
- Section Line
- Land Cover Boundary

- C** = Cropland
- F** = Upland Forest
- G** = Grassland
- W** = Wetland
- OF** = Open Field
- RD** = Road
- RS** = Residential
- CM** = Commercial

Mapping Provided By:

NRC
Natural Resources Consulting, Inc.

209 Commerce Parkway
P.O. Box 128
Cottage Grove, WI 53527-0128
phone: 608-839-1998
fax: 608-839-1995
www.nrcdifference.com

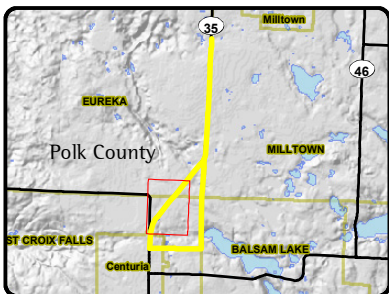
Base Map Data Sources: NWE, WDOT & USDA NAIP 2008 Orthophotography

Appendix A Figure 5 - Page 6 of 8

The information presented in this map document is advisory and is intended for reference purposes only.



APPENDIX A FIGURE 5 - ORTHOPHOTOGRAPHY / LAND COVER Centuria 69 kV Transmission Line and Substation Project



Location
Parts of S19 and S30-31, T35N, R17W;
S36, T35N, R18W; S1 and S12, T34N, R18W
Polk County, WI

0 200 400 Feet

Project Information
Project Number : 009-0015-01
September 4, 2009

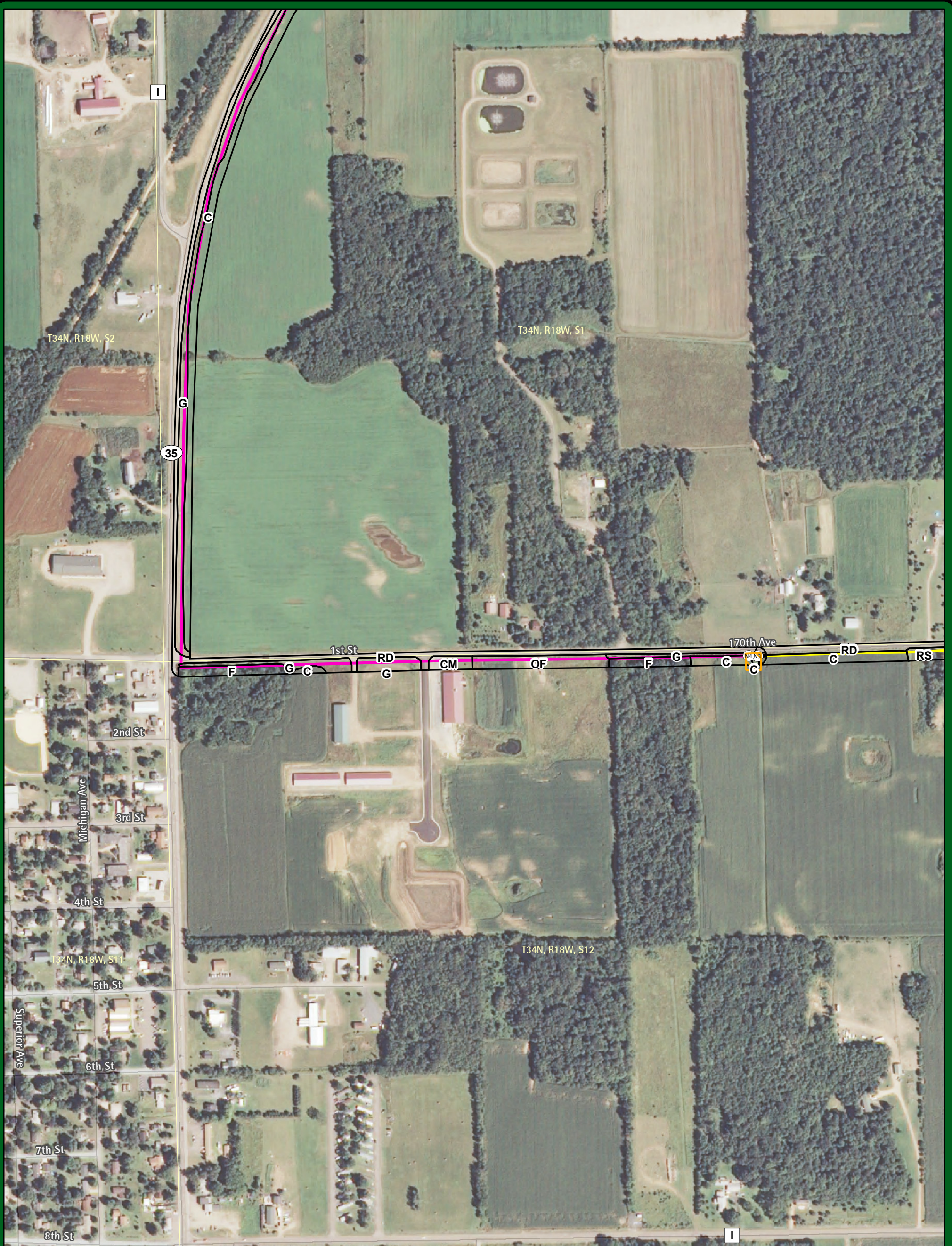
Legend

- Nodes
- Approximate Preferred Route
- Approximate Alternate Route Segment
- Approximate Substation Site
- Township Line
- Section Line
- Land Cover Boundary
- C = Cropland
- F = Upland Forest
- G = Grassland
- W = Wetland
- OF = Open Field
- RD = Road
- RS = Residential
- CM = Commercial

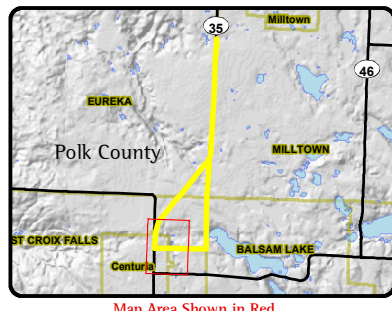
Mapping Provided By:

NRC
Natural Resources Consulting, Inc.
209 Commerce Parkway
P.O. Box 128
Cottage Grove, WI 53527-0128
phone: 608-839-1998
fax: 608-839-1995
www.nrcdifference.com

Base Map Data Sources: NWECC, WDOT & USDA NAIP 2008 Orthophotography



APPENDIX A FIGURE 5 - ORTHOPHOTOGRAPHY / LAND COVER Centuria 69 kV Transmission Line and Substation Project



Location
Parts of S19 and S30-31, T35N, R17W;
S36, T35N, R18W; S1 and S12, T34N, R18W
Polk County, WI

0 200 400 Feet

Project Information
Project Number : 009-0015-01
September 4, 2009

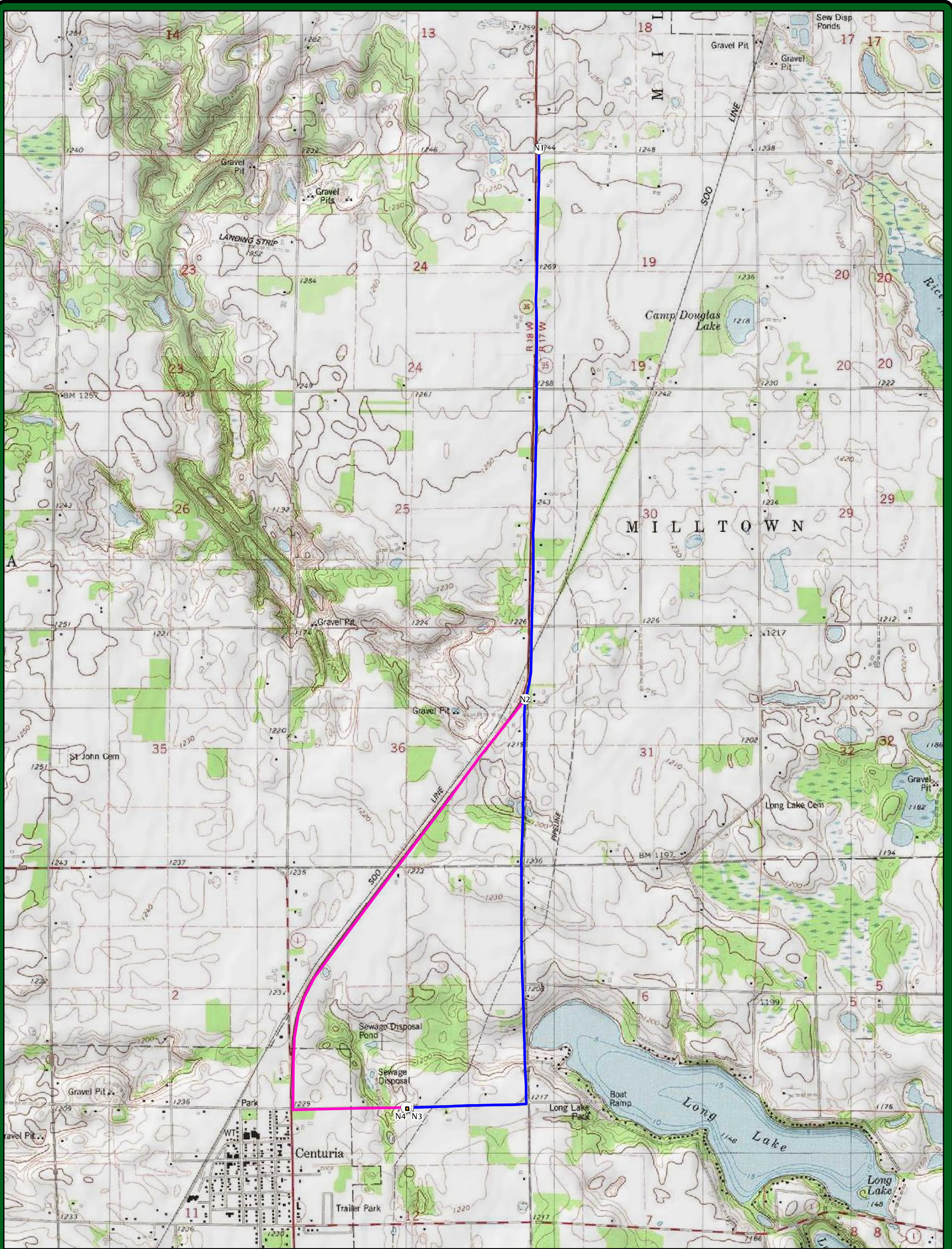
Legend	
	Nodes
	Approximate Preferred Route
	Approximate Alternate Route Segment
	Approximate Substation Site
	Township Line
	Section Line
	Land Cover Boundary
C	= Cropland
F	= Upland Forest
G	= Grassland
W	= Wetland
OF	= Open Field
RD	= Road
RS	= Residential
CM	= Commercial

Mapping Provided By:

NRC
Natural Resources Consulting, Inc.

209 Commerce Parkway
P.O. Box 128
Cottage Grove, WI 53527-0128
phone: 608-839-1998
fax: 608-839-1995
www.nrcdifference.com

Base Map Data Sources: NWECC, WDOT & USDA NAIP 2008 Orthophotography



APPENDIX A FIGURE 6 - TOPOGRAPHY MAP

Centuria 69 kV Transmission Line and Substation Project



Location
 Parts of S19 and S30-31, T35N, R17W;
 S36, T35N, R18W; S1 and S12, T34N, R18W
 Polk County, WI

0 1,000 2,000 Feet

Project Information
 Project Number : 009-0015-01
 September 4, 2009

Legend

- Nodes
- Approximate Preferred Route
- Approximate Alternate Route Segment
- Approximate Substation Site

Mapping Provided By:

NRC
 Natural Resources Consulting, Inc.

209 Commerce Parkway
 P.O. Box 128
 Cottage Grove, WI 53527-0128
 phone: 608-839-1998
 fax: 608-839-1995
 www.nrcdifference.com

Base Map Data Sources: USGS 7.5' Topographic Quadrangle

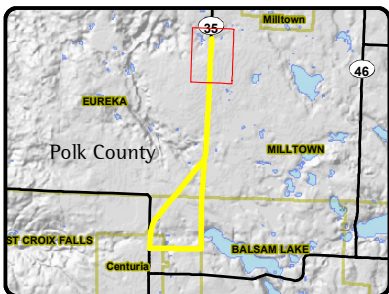
Appendix A Figure 6 - Page 1 of 1

The information presented in this map document is advisory and is intended for reference purposes only.



APPENDIX A FIGURE 8 - TAX PARCEL MAP

Centuria 69 kV Transmission Line and Substation Project



Location

Parts of S19 and S30-31, T35N, R17W;
S36, T35N, R18W; S1 and S12, T34N, R18W
Polk County, WI

0 200 400 Feet

Project Information

Project Number : 009-0015-01
September 4, 2009

Legend

Nodes	Township Line
Approximate Preferred Route	Section Line
Approximate Alternate Route Segment	Trail
80 ft Project ROW	
Approximate Substation Site	
Parcel Boundary	

Mapping Provided By:

NRC

Natural Resources Consulting, Inc.

209 Commerce Parkway
P.O. Box 128
Cottage Grove, WI 53527-0128
phone: 608-839-1998
fax: 608-839-1995
www.nrcdifference.com

Base Map Data Sources: NWECC, WDOT, WDNR, Polk County GIS & USDA NAIP 2008 Orthophotography

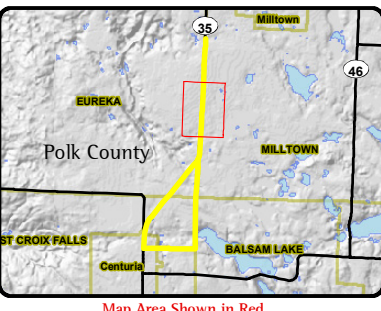
Appendix A Figure 8 - Page 1 of 8

The information presented in this map document is advisory and is intended for reference purposes only.



APPENDIX A FIGURE 8 - TAX PARCEL MAP

Centuria 69 kV Transmission Line and Substation Project



Location

Parts of S19 and S30-31, T35N, R17W;
S36, T35N, R18W; S1 and S12, T34N, R18W
Polk County, WI

0 200 400 Feet

Project Information

Project Number : 009-0015-01
September 4, 2009

Legend

- Nodes
- Approximate Preferred Route
- Approximate Alternate Route Segment
- ⊞ 80 ft Project ROW
- Approximate Substation Site
- ▭ Parcel Boundary
- ▭ Township Line
- ▭ Section Line
- Trail

Mapping Provided By:

NRC

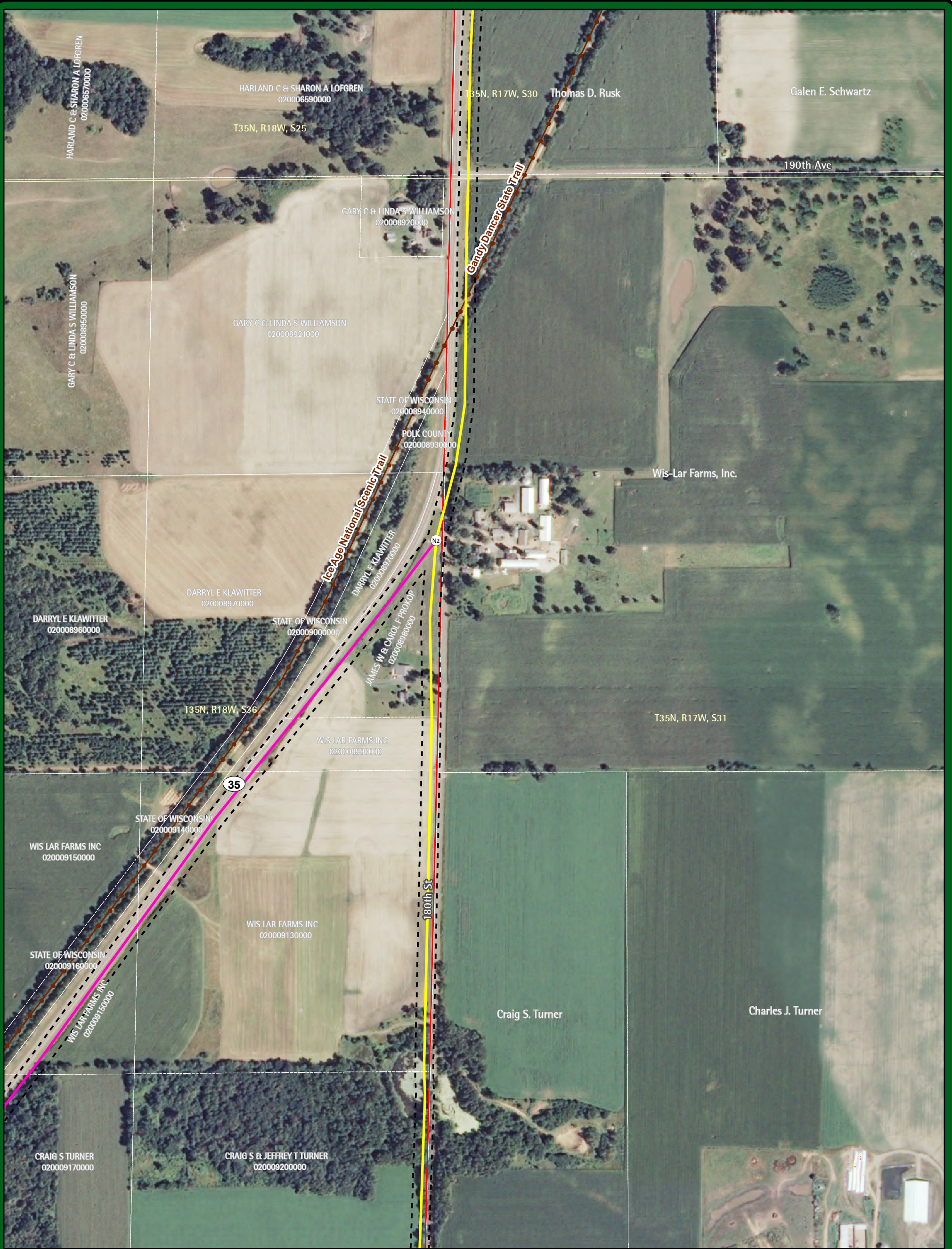
Natural Resources Consulting, Inc.

209 Commerce Parkway
P.O. Box 128
Cottage Grove, WI 53527-0128
phone: 608-839-1998
fax: 608-839-1995
www.nrcdifference.com

Base Map Data Sources: NWECC, WDOT, WDNR, Polk County GIS & USDA NAIP 2008 Orthophotography

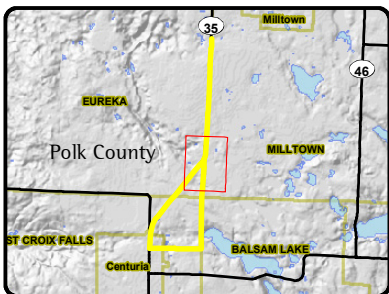
Appendix A Figure 8 - Page 2 of 8

The information presented in this map document is advisory and is intended for reference purposes only.



APPENDIX A FIGURE 8 - TAX PARCEL MAP

Centuria 69 kV Transmission Line and Substation Project



Location

Parts of S19 and S30-31, T35N, R17W;
S36, T35N, R18W; S1 and S12, T34N, R18W
Polk County, WI

0 200 400 Feet

Project Information

Project Number : 009-0015-01
September 4, 2009

Legend

- Nodes
- Approximate Preferred Route
- Approximate Alternate Route Segment
- - - 80 ft Project ROW
- Approximate Substation Site
- Parcel Boundary
- ▭ Township Line
- ▭ Section Line
- Trail

Mapping Provided By:

NRC
Natural Resources Consulting, Inc.

209 Commerce Parkway
P.O. Box 128
Cottage Grove, WI 53527-0128
phone: 608-839-1998
fax: 608-839-1995
www.nrcdifference.com

Base Map Data Sources: NWECC, WDOT, WDNR, Polk County GIS & USDA NAIP 2008 Orthophotography

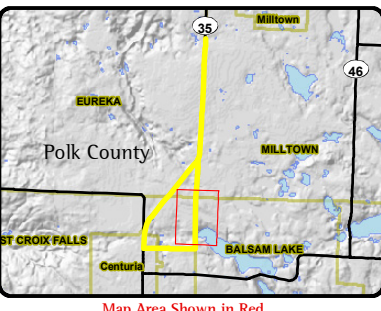
Appendix A Figure 8 - Page 3 of 8

The information presented in this map document is advisory and is intended for reference purposes only.



APPENDIX A FIGURE 8 - TAX PARCEL MAP

Centuria 69 kV Transmission Line and Substation Project



Location

Parts of S19 and S30-31, T35N, R17W;
S36, T35N, R18W; S1 and S12, T34N, R18W
Polk County, WI

0 200 400 Feet

Project Information

Project Number : 009-0015-01
September 4, 2009

Legend

Nodes	Township Line
Approximate Preferred Route	Section Line
Approximate Alternate Route Segment	Trail
80 ft Project ROW	
Approximate Substation Site	
Parcel Boundary	

Mapping Provided By:

NRC

Natural Resources Consulting, Inc.

209 Commerce Parkway
P.O. Box 128
Cottage Grove, WI 53527-0128
phone: 608-839-1998
fax: 608-839-1995
www.nrcdifference.com

Base Map Data Sources: NWECC, WDOT, WDNR, Polk County GIS & USDA NAIP 2008 Orthophotography

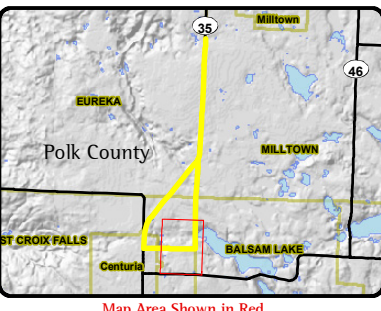
Appendix A Figure 8 - Page 4 of 8

The information presented in this map document is advisory and is intended for reference purposes only.



APPENDIX A FIGURE 8 - TAX PARCEL MAP

Centuria 69 kV Transmission Line and Substation Project



Location

Parts of S19 and S30-31, T35N, R17W;
S36, T35N, R18W; S1 and S12, T34N, R18W
Polk County, WI

0 200 400 Feet

Project Information

Project Number : 009-0015-01
September 4, 2009

Legend

Nodes	Township Line
Approximate Preferred Route	Section Line
Approximate Alternate Route Segment	Trail
80 ft Project ROW	
Approximate Substation Site	
Parcel Boundary	

Mapping Provided By:

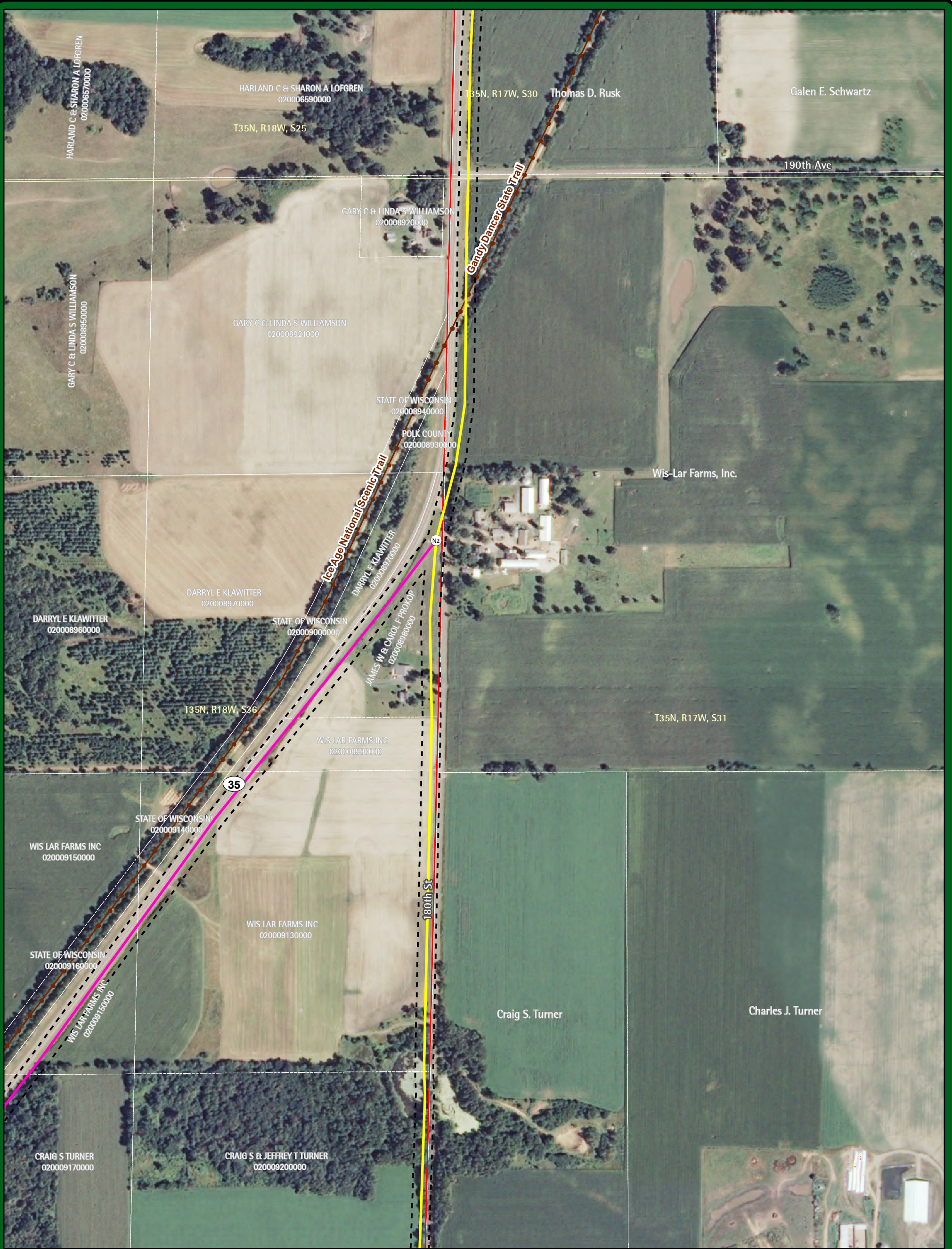
NRC
Natural Resources Consulting, Inc.

209 Commerce Parkway
P.O. Box 128
Cottage Grove, WI 53527-0128
phone: 608-839-1998
fax: 608-839-1995
www.nrcdifference.com

Base Map Data Sources: NWE, WDOT, WDNR, Polk County GIS & USDA NAIP 2008 Orthophotography

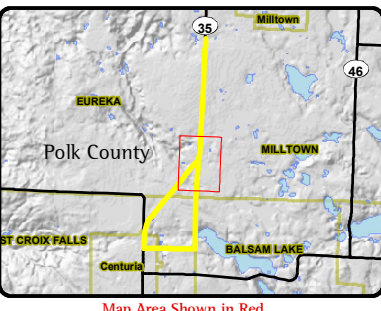
Appendix A Figure 8 - Page 5 of 8

The information presented in this map document is advisory and is intended for reference purposes only.



APPENDIX A FIGURE 8 - TAX PARCEL MAP

Centuria 69 kV Transmission Line and Substation Project



Location

Parts of S19 and S30-31, T35N, R17W;
S36, T35N, R18W; S1 and S12, T34N, R18W
Polk County, WI

0 200 400 Feet

Project Information

Project Number : 009-0015-01
September 4, 2009

Legend

- Nodes
- Approximate Preferred Route
- Approximate Alternate Route Segment
- - - 80 ft Project ROW
- Approximate Substation Site
- Parcel Boundary
- ▭ Township Line
- ▭ Section Line
- Trail

Mapping Provided By:

NRC
Natural Resources Consulting, Inc.

209 Commerce Parkway
P.O. Box 128
Cottage Grove, WI 53527-0128
phone: 608-839-1998
fax: 608-839-1995
www.nrcdifference.com

Base Map Data Sources: NREC, WDOT, WDNR, Polk County GIS & USDA NAIP 2008 Orthophotography

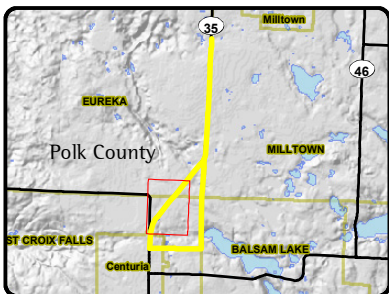
Appendix A Figure 8 - Page 6 of 8

The information presented in this map document is advisory and is intended for reference purposes only.



APPENDIX A FIGURE 8 - TAX PARCEL MAP

Centuria 69 kV Transmission Line and Substation Project



Location
 Parts of S19 and S30-31, T35N, R17W;
 S36, T35N, R18W; S1 and S12, T34N, R18W
 Polk County, WI

0 200 400 Feet

Project Information
 Project Number : 009-0015-01
 September 4, 2009

Legend	
	Nodes
	Approximate Preferred Route
	Approximate Alternate Route Segment
	80 ft Project ROW
	Approximate Substation Site
	Parcel Boundary
	Township Line
	Section Line
	Trail

Mapping Provided By:

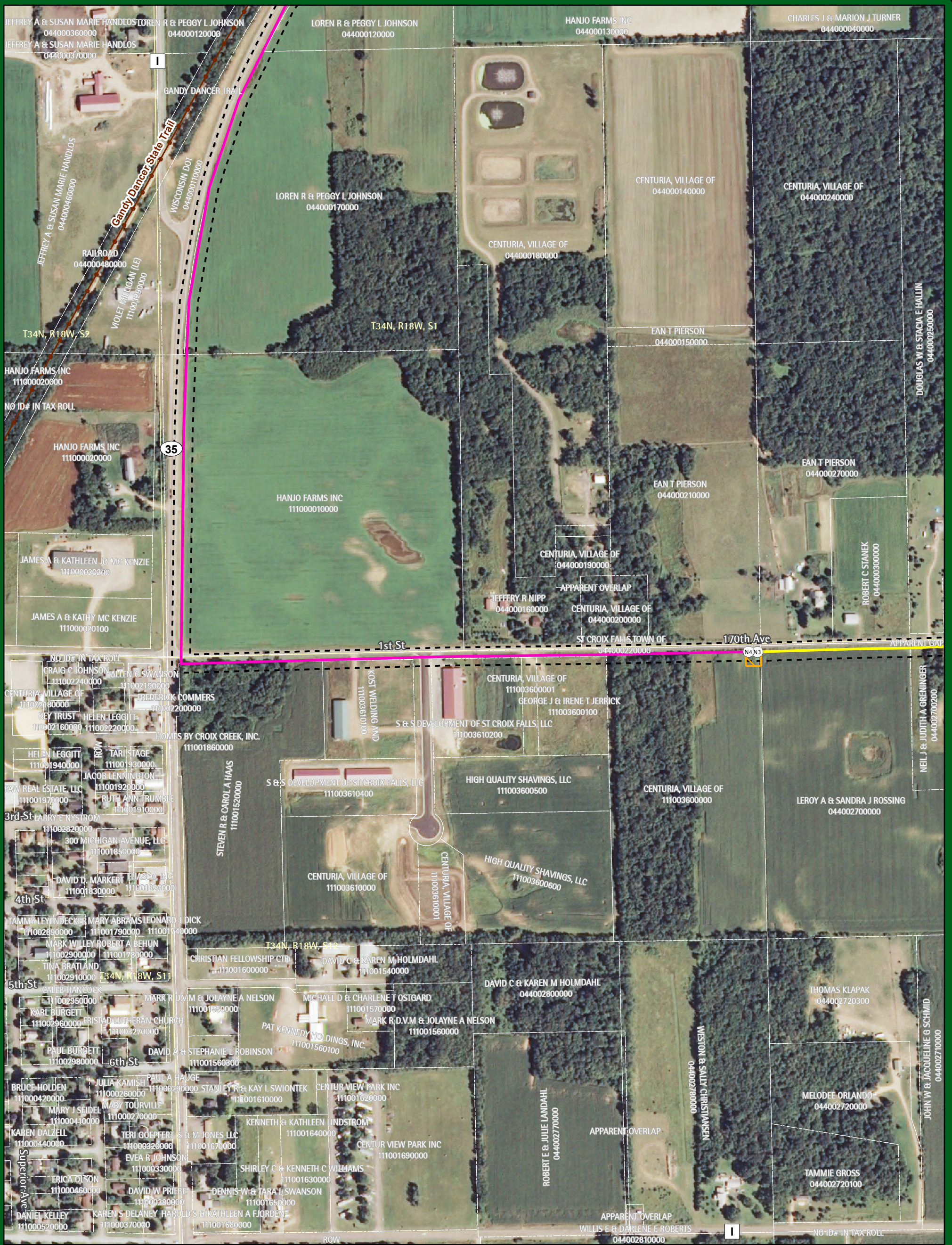
NRC
 Natural Resources Consulting, Inc.

209 Commerce Parkway
 P.O. Box 128
 Cottage Grove, WI 53527-0128
 phone: 608-839-1998
 fax: 608-839-1995
www.nrcdifference.com

Base Map Data Sources: NREC, WDOT, WDNR, Polk County GIS & USDA NAIP 2008 Orthophotography

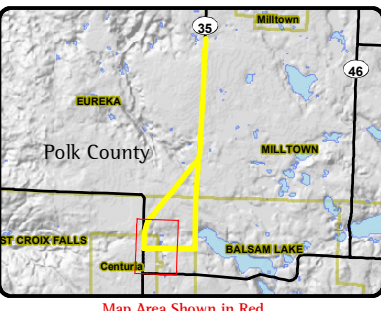
Appendix A Figure 8 - Page 7 of 8

The information presented in this map document is advisory and is intended for reference purposes only.



APPENDIX A FIGURE 8 - TAX PARCEL MAP

Centuria 69 kV Transmission Line and Substation Project



Location

Parts of S19 and S30-31, T35N, R17W;
S36, T35N, R18W; S1 and S12, T34N, R18W

Polk County, WI

Project Information

Project Number : 009-0015-01
September 4, 2009

Legend

Nodes	Township Line
Approximate Preferred Route	Section Line
Approximate Alternate Route Segment	Trail
80 ft Project ROW	
Approximate Substation Site	
Parcel Boundary	

Mapping Provided By:

NRC
Natural Resources Consulting, Inc.

209 Commerce Parkway
P.O. Box 128
Cottage Grove, WI 53527-0128
phone: 608-839-1998
fax: 608-839-1995
www.nrcdifference.com

Base Map Data Sources: NWECC, WDOT, WDNR, Polk County GIS & USDA NAIP 2008 Orthophotography

Appendix A Figure 8 - Page 8 of 8

The information presented in this map document is advisory and is intended for reference purposes only.